

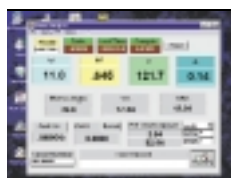
PRODUCT DATA SHEET

True RMS Appliance Tester/Power Analyzer

Compact, battery operated device for analyzing AC/DC power loads — with RS-232 interface and Windows® software, plus datalogging

Features:

- Four simultaneous LCD displays of Watts, Power Factor or VA, Voltage or Hz, Amps
- True RMS Voltage and current measurements of sine, square, triangular and distorted wave forms with a crest factor < 5
- Plug device to be tested directly into the Power Analyzer
- Built in Datalogger stores up to 1,012 readings. Choice of single record storage or continuous datalogging
- Model 380801 used for data acquisition when connected to a PC
- Choice of battery or AC/DC adaptor power provides line isolation
- Max Recall, Data Hold, Overload Protection
- Sampling (update) rate is 2.5 times per second
- Windows® based software allows user to download stored data or save data directly, and to create an ASCII file. Computations include phase angle, apparent and reactive power, consumption and cost, and power factor correction
- Includes software, serial cable, 8 AA batteries, power cord, 117 VAC adaptor and case.



Windows® Software included to monitor readings on PC, display KWH, KWH/month, cost and print reports

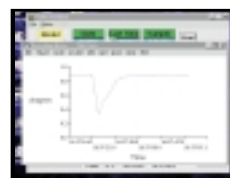


Chart any of the measurements over time and save/print data by pressing Print key.



View tested product's equivalent circuit and phase angle diagram. Power factor correction determines capacitor value.

Applications

- Measure and Audit power consumption of single phase devices.
- Evaluate load performance under varying line conditions.
- Demonstrate effectiveness of power conservation efforts.
- Characterize device AC or DC power requirements.

Specifications:	Range	Resolution	Accuracy(%rdg+digits)	Input Signal Range
WATT (AC/DC)	200/2000W	0.1/1W	±(0.9% +4d)	300V, 20A, 0-400Hz
POWER FACTOR (PF=Watt/VA)	0-1.00	0.001	±4 digits	250V, 20A, 50/60Hz
VOLTAGE:				Overload Protection
Autorangeing	200.0/750V	0.1/1V	±(0.9% +3d)	1000VDC, 750VAC
CURRENT	2/20A via terminals 2/15via sockets	1mA/10mA	±(0.9% +3d)	Fuse Protection 20.00A DCA/ACA
FREQUENCY	2K,20MHz	1Hz-10KHz	±(0.5% +2d)	
Dimensions/Weight:	13.9x11.8x3.9" (352x300x100mm) / 3.6 lbs. (1.6 kg)			

Ordering Information

380801.....True RMS Single Phase Power Analyzer
 380801-NIST...True RMS Single Phase Power Analyzer w/NIST Certificate
 380803.....True RMS Power Analyzer Datalogger
 380803-NIST...True RMS Power Analyzer Datalogger w/NIST Certificate
 152340.....240VAC Adaptor

EXTECH

ISO 9001 Certified
03/99-R4

Extech Instruments Corporation
 285 Bear Hill Road, Waltham, MA 02451-1064
 Phone: 781-890-7440 • FAX 781-890-7864
 Web: www.extech.com