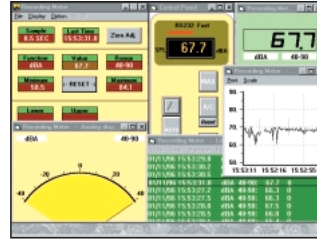


Datalogging Light Meter with PC Interface

Measure Light Intensity from 0.01 to 20,000 Fc & Lux, Capture up to 16,000 readings

Features:

- Large 3-1/2 Digit (1999 count) multi-function LCD
- Selectable units of Foot Candles or Lux
- Four measurement ranges with up to 0.01 resolution (Fc or Lux)
- Calculates Luminous Intensity (candela) via interface software
- Basic Accuracy of $\pm 3\%$ reading
- Remote, high accuracy silicon photo-diode light sensor with protective cover
- Maximum reading and Data Hold plus low battery indication
- Capture and transfer up to 16,000 readings with selectable sampling rate
- RS-232 PC interface for remote meter operation and datalogging
- Complete with Windows® 95 software, RS-232 cable, 9V battery and carrying case



Applications:

- Workplace, clean-room, and industrial light testing for OSHA compliance. School and library light testing. Law enforcement agencies, building security, and ATM areas. Ambient testing for light-sensitive displays and archives in areas such as museums and art galleries. Many video, photographic, and architectural uses.



Specifications:	Range (Lux/Fc)	Resolution	Accuracy
Light Intensity	0-20	0.01	$\pm(3\%$ reading + 5 digits)
	0-200	0.1	
	0-2,000	1	
	0-20,000	10	
Operating Temperature	32 to 104°F (0 to 40°C)		
Operating Humidity	Less than 80%		
Power source	9V battery (included); 50 hour battery life		
Applicable Standards	JIS C1609-1993; CNS 5119-1998; Standard illuminant 'A'		
Dimensions	5.7 x 2.8 x 1.2" (145 x 72 x 31mm)		
Weight	7.5 oz. (235g)		

Ordering Information:

401036Datalogging Light Meter with PC Interface
401036-NIST ..Datalogging Light Meter w/ PC Interface w/NIST Certificate